

24/7 365



CRITICAL TRAINING
CRITICAL TIMES

2014

URBAN SHIELD

ALAMEDA COUNTY SHERIFF'S OFFICE



The Sheriff is authorized to furnish equipment and services to other law enforcement agencies. This is not a contract. The Sheriff's Office is not responsible for the actions of other law enforcement agencies.

URBAN SHIELD

- Urban Shield is a continuous, 48-hour Full Scale Multi-Disciplinary Homeland Security/Disaster Preparedness Exercise hosted by the Alameda County Sheriff's Office, with the support of the Bay Area Urban Area Security Initiative (UASI), and more than 200 local, state, federal, international and private sector partners.
- First responders are presented with exercise scenarios that incorporate key elements of real-world emergencies and major critical incidents at various scenario sites in Alameda, Contra Costa, San Francisco, San Mateo and Santa Clara counties.
- An Incident Command System (ICS) structure—with nine area Commands, Medical Checkpoints, and a Department Operations Center (DOC)—will be implemented to manage the multi-location and multi-discipline full-scale exercise for Urban Shield 2014.



URBAN SHIELD

- The overarching goals of Urban Shield are to provide a multi-layered training exercise to enhance the skills and abilities of regional first responders, as well as those responsible for coordinating and managing large scale events. This exercise is designed to identify and stretch regional resources to their limits, test core capabilities, while expanding regional collaboration and building positive relationships. In addition, this exercise provides increased local business and critical infrastructure collaboration.
- Urban Shield 2014 will operate under the principals of the National Incident Management System (NIMS), Standardized Emergency Management System (SEMS) and the Incident Command System (ICS) structure. Regional emergency management personnel will control the exercise utilizing the Emergency Operation Centers and mobile command posts throughout the region. Alameda County OHSES will serve as the Department Operations Center (DOC).



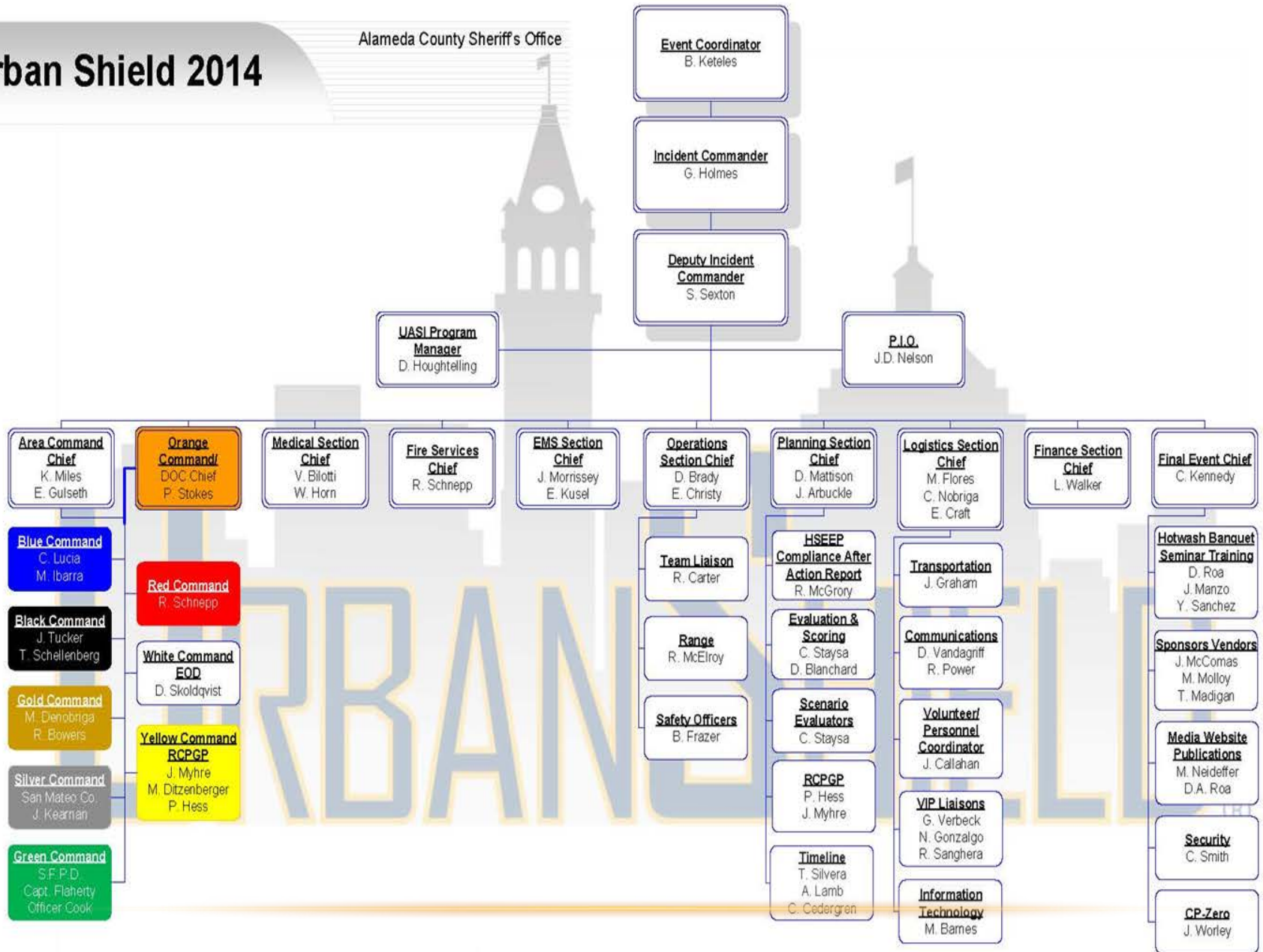
RISK OVERVIEW ASSESSMENT

- Law enforcement, fire, Emergency Operations Center (EOC) and EMS personnel, representing agencies throughout the Bay Area UASI Region, will participate in some, or all, of the realistic scenarios. Their capabilities and equipment will be evaluated by related experts, in order to provide an accurate regional assessment that result in a meaningful Gap Analysis, After Action Report (AAR) and Improvement Plan.
- Urban Shield follows the Homeland Security Exercise and Evaluation Program (HSEEP) methodology.
- Urban Shield is used as a mechanism to develop and maintain the tracking of regional assets so that we verify their location, level of readiness and capability to improve regional preparedness.



Urban Shield 2014

Alameda County Sheriff's Office



PARTICIPATING TEAMS 2014

35 PARTICIPATING TACTICAL TEAMS



Alameda County
Sheriff's Office



Alameda Police
Department



Berkeley Police
Department



California Department of
Corrections



California Highway
Patrol



Martinez/San
Ramon/Walnut Creek
Police Department



Contra Costa County
Sheriff's Office



Daly City Police
Department



East Bay Regional
Parks Police



East County Tactical



Fremont Police
Department



Hayward Police
Department

PARTICIPATING TEAMS 2014

35 PARTICIPATING TACTICAL TEAMS



Marin County Sheriff's
Office



Newark Police
Department



North Central Region
SWAT Team



Oakland Police
Department



Philadelphia Police
Department



Pittsburg Police
Department



Redwood City Police
Department



Richmond Police
Department



Sacramento Police
Department



San Francisco Police
Department



San Francisco Sheriff's
Department



San Jose Police
Department

PARTICIPATING TEAMS 2014

35 PARTICIPATING TACTICAL TEAMS



San Leandro Police
Department



San Mateo County
Sheriff's Office



Santa Clara County
Sheriff's Office



Singapore Police
Force STAR Unit



South Korea Coast
Guard Police SSAT



Stanislaus County
Sheriff's Office



Sunnyvale Public
Safety Department



Travis County
Sheriff's Office, Texas



Union City Police
Department



U.C. Berkeley Police
Department



U.S. Marines Force
Reconnaissance Co.

PARTICIPATING TEAMS 2014

26 PARTICIPATING FIRE AGENCIES

HAZMAT TEAMS 2014



Alameda County Fire Department



101 WMD Civil Support/Idaho Regional Response Teams



Livermore Pleasanton Fire Department



Oakland Fire Department



San Jose Fire Department



San Ramon Valley Fire District



Santa Clara City Fire Department



Santa Clara County Fire Department

PARTICIPATING TEAMS 2014

26 PARTICIPATING FIRE AGENCIES

TECHNICAL RESCUE/USAR TEAMS 2014



Alameda County Fire Department



Central County Fire Department



Monterey County Operational USAR Team 1



Monterey County Operational USAR Team 2



Napa Interagency Rescue Team



Oakland Fire Department



San Jose Fire Department



San Ramon Valley Fire District



Santa Clara City Fire Department



South San Francisco Fire Department



Sunnyvale Public Safety Department

PARTICIPATING TEAMS 2014

26 PARTICIPATING FIRE AGENCIES

WATER RESCUE/MARITIME TEAMS 2014



Alameda City Fire
Department



Alameda County Fire
Department



Livermore Pleasanton
Fire Department



Monterey County Fire
Department



Oakland Fire
Department



Richmond Fire
Department



South San Francisco
Fire Department

PARTICIPATING TEAMS 2014

9 EOD PARTICIPATING TEAMS



Brazil CORE Bomb Squad



Monterey County Sheriff's Office Bomb Squad



Riverside County Sheriff's Office Bomb Squad



Sacramento Area EOD Unit



San Francisco Police Department Bomb Squad



St. Paul Minnesota Police Department Bomb Squad



U.C. Berkeley Police Department Bomb Squad



U.S. Army 759th Ordnance Company



U.S. Marine Corps MWSS-372 EOD

HOST AGENCIES



Black Command

Alameda County
Sheriff's Office



Green Command

San Francisco Police
Department



Blue Command

Alameda County
Sheriff's Office



Silver Command

San Mateo County
Sheriff's Office



Gold Command

Alameda County
Sheriff's Office



Orange Command

Alameda County
Sheriff's Office



Red Command

Alameda County Fire
Department



White Command

Alameda County
Sheriff's Office



Yellow Command

BAUASI

SCENARIOS

- 31 Tactical Scenarios
- 4 Medical Checkpoints
- 5 EOD Scenarios
- 17 Fire Scenarios
- RCPGP Mass Fatality



RED AREA COMMAND HAZMAT – 95TH CST

- Radiological Emergency
- Detection/Monitoring/Identification
- Biological Agent (in luggage)
- Rail Tank Car Emergency
- Clandestine Lab / Plume Models
- Chemical Warfare Agent Lab



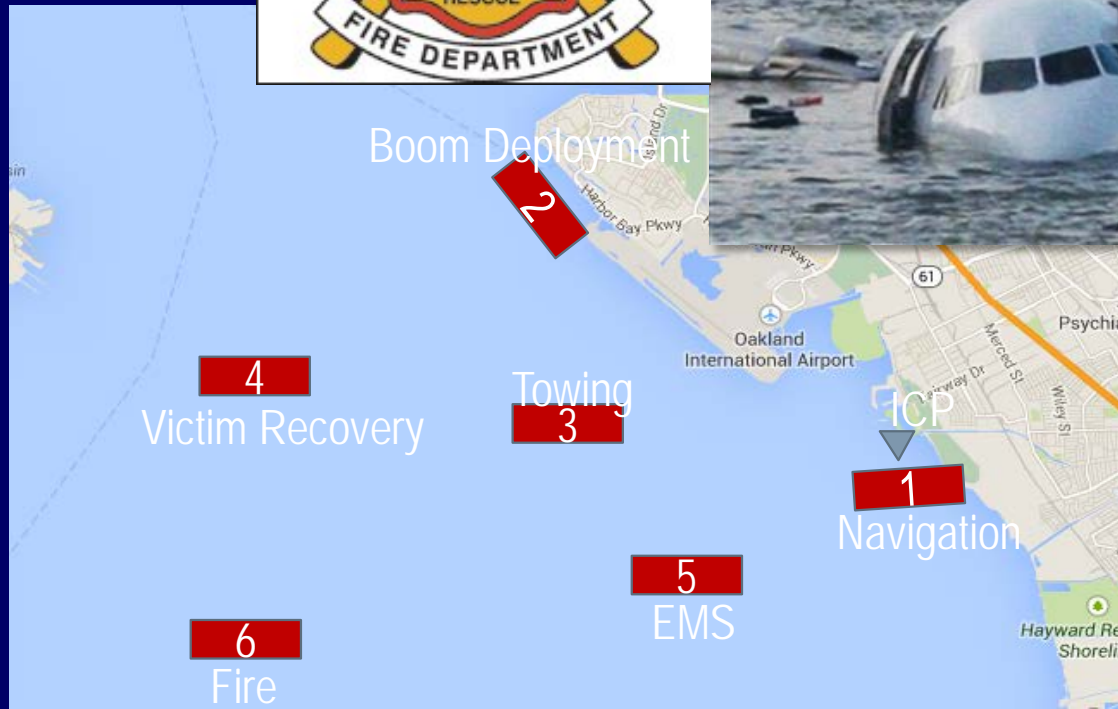
RED AREA COMMAND USA&R

- Building Collapse
- Confined-Space Rescue / IED Recognition
- High-Angle Rescue
- Low-Angle Rescue



RED AREA COMMAND WATER RESCUE

- Plane Crash – Group Exercise
- Navigation
- Boom Deployment
- Towing
- Victim Recovery
- EMS
- Fire



SESSION I



SHERIFF GREGORY J. AHERN
INVITES YOUR ORGANIZATION TO ATTEND

REGIONAL PREPAREDNESS TRAINING SEMINAR AND VENDOR SHOW



September 4, 2014

0730-1700 HOURS TRAINING SEMINAR • 0800-1700 HOURS VENDOR SHOW



This project is supported by the California Emergency Management Agency in cooperation with 2011 Urban Area Security Initiative grant funds awarded by the U.S. Department of Homeland Security.

OAKLAND MARRIOTT
CONVENTION CENTER
1001 Broadway • Oakland, CA 94607



OAKLAND MARRIOTT CONVENTION CENTER

1001 Broadway • Oakland, CA 94607

Thursday | September 4, 2014

SEMINAR & LUNCH PROVIDED AT NO COST

0730 – 0800 Hours
CHECK-IN

0830 – 1000 Hours
**THE MISSION ORIENTED MASS
MURDERER: A BEHAVIORAL
AND OPERATIONAL
PERSPECTIVE**

Mary O'Toole, FBI Special Agent (Ret.),
Behavioral Analysis Unit

1000 – 1015 Hours
BREAK / VENDOR SHOW

1015 – 1145 Hours
**THE MEDICAL RESPONSE TO
THE ASIANA FLIGHT 214
PLANE CRASH AT SFO**

Eric A. Weiss, MD, FACEP,
Stanford University, Division of
Emergency Medicine

1145 – 1300 Hours
LUNCH / VENDOR SHOW

1300 – 1430 Hours
**LESSONS LEARNED: LOS AN-
GELES INTERNATIONAL AIR-
PORT (LAX) SHOOTING**

Patrick M. Gannon,
Deputy Executive Director
Homeland Security and Public
Safety for LAWA

1430 – 1445 Hours
BREAK / VENDOR SHOW

1445 – 1515 Hours
**POLICE UNDER ATTACK: A
DEBRIEF/REVIEW OF THE
CHRISTOPHER DORNER
INCIDENT**

Trevis Newport, Sergeant
Mauricio "Moe" Hurtado, Detective
San Bernardino County Sheriff's
Department

1515 – 1700 Hours
SEMINAR ENDS /
VENDOR SHOW

0730 – 0830 HOURS CHECK-IN

0830 – 1000 HOURS THE MISSION ORIENTED MASS MURDERER: A BEHAVIORAL AND OPERATIONAL PERSPECTIVE

The "Mission Oriented Shooter" is a new breed of mass murderer. He plans his crimes for months if not years, prepares for the murders with maximum weaponry and intends to kill as many people as possible, including strangers. His psychology must be set apart from other killers in terms of what causes this behavior, how it develops, warning signs and how it can be prevented. When the Mission Oriented Shooter becomes an Active Shooter – prevention is no longer possible. It's too late and people have already died. Mission oriented mass killers don't develop in a vacuum, and these men don't just snap. Neither are they completely crazed zombies out of touch with reality, unaware of the consequences of their actions. This presentation will provide an "assessment model" to better understand the behavior and motivation of these types of mass killers. Case examples of mission-oriented shooters will be presented in terms of how they are distinct in terms of motivation, leakage, warning behaviors, preplanning behaviors and the presence of psychopathic traits and characteristics. Implications for threat assessment, intervention and threat management for multidisciplinary experts including law enforcement will be the focus of the presentation.



Mary O'Toole FBI Special Agent (Ret.)

Behavioral Analysis Unit

Dr. Mary Ellen O'Toole is an internationally recognized Forensic Behavioral Consultant. She specializes in the recognition and assessment of concerning, troubling and dangerous behaviors that, if unaddressed, can have a wide range of serious consequences from loss of business and revenue to loss of lives.

Dr. O'Toole served as an FBI Agent for nearly 28 years, where she worked in the Bureau's Behavioral Analysis Unit (BAU). Dr. O'Toole consulted on many of the FBI's highest profile and most complex cases, including school and campus violence threats, workplace violence threats, targeted violence against public and private institutions, homicides, kidnappings, sexual assaults, predatory behavior, child molestation, product tampering cases, extortions and other crimes of violence against children, adults and institutions.

Dr. O'Toole lectures at the FBI Academy, has been adjunct faculty to the FBI's Leadership Development Institute (LDI) and adjunct faculty at the University of Virginia. She has published in the areas of corporate psychopathy, threat assessment, stalking, school and campus violence, warning signs for dangerousness, interviewing and victimology.

Dr. O'Toole is a Fellow in: The American Academy of Forensic Sciences, The International Criminal Investigative Analysis Fellowship (ICIAF) and The Society for the Scientific Study of Psychopathy (SSSP). She is also a member of the Society for Former Special Agents of the FBI.

1000 – 1015 HOURS BREAK / VENDOR SHOW

1015 – 1145 HOURS THE MEDICAL RESPONSE TO THE ASIANA FLIGHT 214 PLANE CRASH AT SFO

Stanford University Medical Center is the Trauma Center for San Mateo County and provided medical care for more victims from the Asiana Flight 214 Plane Crash than any other hospital, including two flight attendants who were ejected from the aircraft. This presentation discusses the disaster response to the plane crash, the medical care provided and unique aspects of the incident and mechanism for many of the injuries.



Eric A. Weiss MD, FACEP

Stanford University, Division of Emergency Medicine

Eric A. Weiss, MD, FACEP is a Professor of Surgery and Emergency Medicine at Stanford University School of Medicine, and an Attending Physician in the Stanford University Hospital Emergency Department. He is the Founder and Medical Director of the Stanford University Medical Center Office of Emergency Management and has overseen Disaster Medicine and Planning at Stanford for the past 20 years. He has served on the planning committee and been a keynote speaker for the California Hospital Association Disaster Planning Conference Committee. He is the Chairman of the Stanford University Medical Center and Lucile Packard Children's Hospital Bioterrorism and Pandemic Task Force. He is Director of the Stanford University Fellowship in Wilderness Medicine and Co-Director of the Stanford University Fellowship in EMS/Disaster Medicine. He is the former Medical Director of the San Mateo County Emergency Medical Services Agency. Dr. Weiss led the medical response to the Asiana Plane Crash at San Francisco International Airport in July of 2013.

1300 – 1430 HOURS

LESSONS LEARNED: LOS ANGELES INTERNATIONAL AIRPORT (LAX) SHOOTING

On November 1, 2013, at approximately 0920 hours, Paul Anthony Ciancia, entered Terminal 3 at the Los Angeles International Airport (LAX) and opened fire with an assault rifle killing one person and wounding three others. Law enforcement officers arrived within minutes of the shooting and engaged the gunman near Gate 35 where he was wounded and taken into custody. A unified command was immediately established between the Airport Police, the Los Angeles Police Department, the Los Angeles Fire Department, LAX Airport Operations and the Federal Bureau of Investigation (FBI). These agencies worked together to secure the terminal, search for secondary threats and hazards, administer first aid, transport wounded, locate and secure possible witnesses, and effect the evacuation of passengers. The shooting at Terminal 3 had far reaching impacts on airport operations including the closure of several terminals, the restriction of pedestrian and vehicular traffic into the Central Terminal Area (CTA) causing severe congestion throughout the surrounding community, and major disruptions to regional air traffic lasting for several hours. Chief Gannon will discuss the lessons learned for this shooter and how you may use these lessons to improve your response to an active shooter incident.



Patrick M. Gannon Deputy Executive Director
Homeland Security and Public Safety for LAWA

Patrick M. Gannon, Deputy Executive Director (DED) of Homeland Security and Public Safety for Los Angeles World Airports (LAWA), began his service with the organization in November 2012, as Chief of Airport Police following 34 years of service with the Los Angeles Police Department. On June 4, 2014, he was appointed as DED, as he will continue to serve as Chief of Airport Police. As Deputy Executive Director, Gannon is responsible for airport security, including policing, counterterrorism efforts, and other emergency response functions for LAWA's three airports. He will provide leadership, management oversight, and policy direction to all law enforcement and security staff; coordinate with other Law Enforcement Agencies; and oversee firefighting, emergency medical, and fire prevention services provided by the Los Angeles Fire Department at LAX.

1430 – 1445 HOURS BREAK / VENDOR SHOW

1445 – 1515 HOURS

POLICE UNDER ATTACK: A DEBRIEF/REVIEW OF THE CHRISTOPHER DORNER INCIDENT

For ten days in February 2013, former LAPD Officer Christopher Dorner put Southern California policing agencies in an unprecedented collective state of alert - one in which both excellent and heroic police work was done, and some regrettable decisions were made. The challenges confronting the principal law enforcement agencies in this incident were immense, and they engaged the incident with different policies from differing organizational cultures and utilizing frequently incompatible communications systems. This incident represents a sentinel event in American policing - one that serves as a warning of needed changes in parts of our public safety system.

With a first of its kind multi-media format, you'll hear behind the scenes information and first-hand accounts. You'll also participate in a unique discussion about lessons learned that will benefit all levels, from patrol personnel to supervisors to management. You won't want to miss this.



Trevis Newport Sergeant
San Bernardino County Sheriff's Department

Trevis Newport is currently a sergeant with the San Bernardino County Sheriff's Department. He graduated from Southern Illinois University with a BS in Workforce Education and Development. He also graduated with a Juris Doctor from William Howard Taft University. In 1999, he joined the San Bernardino County Sheriff's Department and has worked in corrections, patrol, Multiple Enforcement (MET), and homicide. In 2008, he was promoted to the rank of detective and was assigned to the Specialized Investigations Division, Homicide Detail. During his tenure in the homicide detail, Trevis has handled several high-profile murder investigations, officer involved shooting investigations and special investigations. In 2011, he was promoted to the rank of sergeant and was assigned to patrol operations. In 2013, Trevis was reassigned to the homicide detail as a team sergeant. On February 12, 2013, his homicide team was assigned to investigate the murder of Detective Jeremiah MacKay and the attempted murder of Deputy Alex Collins.



Mauricio "Moe" Hurtado Detective
San Bernardino County Sheriff's Department

Detective Mauricio "Moe" Hurtado is a 12 year veteran of the San Bernardino County Sheriff's Department. He worked corrections with the department for approximately four years, before being assigned to patrol operations at Central station. Moe worked six years at Central station, before being promoted to the rank of detective. He has been assigned to the department's Homicide Detail for approximately two years and is currently an acting sergeant for his homicide team. Prior to becoming a deputy sheriff, Moe attended college at California Baptist University, where he earned a Bachelor of Science degree in Criminal Justice.

1515 – 1700 HOURS SEMINAR ENDS / VENDOR SHOW

Register no later than
August 29, 2014 at
<http://ustraining.acso.net>

For more information contact
Jane Manzo 510.272.6921
jdmanzo@acgov.org

UrbanShield.org

SESSION II



SHERIFF GREGORY J. AHERN
INVITES YOUR ORGANIZATION TO ATTEND

MEDICAL TRAINING



September 4, 2014

0730-1600 HOURS TRAINING SEMINAR • 0800-1700 HOURS VENDOR SHOW



This project is supported by the California Emergency Management Agency at no cost to you with 2014 Critical Area Security Initiative grant funds awarded by the U.S. Department of Homeland Security.

**OAKLAND MARRIOTT
CONVENTION CENTER**
1001 Broadway • Oakland, CA 94607



**OAKLAND MARRIOTT
CONVENTION CENTER**
1001 Broadway • Oakland, CA 94607

Thursday | September 4, 2014

SEMINAR & LUNCH PROVIDED AT NO COST

0730 – 0800 Hours
CHECK-IN

0800 – 1600 Hours
MEDICAL TRAINING

1600 – 1700 Hours
TRAINING ENDS /
VENDOR SHOW

Register no later than
August 29, 2014 at
<http://ustraining.acso.net>

For more information contact
Jane Manzo
510.272.6921
jdmanzo@acgov.org

UrbanShield.org

0730 – 0800 HOURS CHECK-IN

0800 – 1600 HOURS
MEDICAL TRAINING | JUNIOR BALLROOM #4, LEVEL II
24 ATTENDEES



Leslie Javine

Law Enforcement and First Response Tactical Casualty Care (LEFR-TCC)
Leslie Javine began her career in the fire service and has spent the past 12 years working in both private and public services. As an educator, she instructs a range of pre-hospital courses to responders from agencies including EMS, fire, and law enforcement. Since 2005 she has been conducting combat medical training for all branches of the armed services across the nation and continues to be involved in tactical and military medicine. Currently a firefighter/paramedic, she is also tasked by NAEMT with developing Tactical Combat Casualty Care programs throughout the western states.

Law Enforcement and First Response Tactical Casualty Care (LEFR-TCC), is continuing education offered through NAEMT's PHTLS program. This new course was developed in collaboration with the Denver Health Department of EMS Education and the Denver Police Department Metro/SWAT unit, and NAEMT's PreHospital Trauma Life Support (PHTLS) Committee. It teaches public safety first responders (police, law enforcement officers, firefighters, and other first responders) the basic medical care interventions that will help save an injured responder's life until EMS practitioners can safely enter a tactical scene.

The course combines the principles of PHTLS and Tactical Combat Casualty Care (TCCC), with the training provided to military medics by all branches of our Armed Services. It is consistent with the Tactical Emergency Casualty Care (TECC) guidelines, and meets the recommendations of the Hartford Consensus Document on Improving Survival from Active Shooter Events.

Course participants will learn life-saving medical actions such as bleeding control with a tourniquet, bleeding control with gauze packs or topical hemostatic agents, and opening an airway to allow a casualty to breathe.

UPON COMPLETION OF THE COURSE PARTICIPANTS WILL:

- Understand the rationale for immediate steps for hemorrhage control (including external hemorrhage control, direct pressure and wound packing, early use of tourniquet for severe hemorrhage, internal hemorrhage control by rapid evacuation, and transportation to major hospital/trauma center.
- Demonstrate the appropriate application of a tourniquet to the arm and leg.
- Describe the progressive strategy for controlling hemorrhage.
- Describe appropriate airway control techniques and devices.
- Demonstrate the correct application of a topical hemostatic dressing (combat gauze).
- Recognize the tactically relevant indicators of shock.
- Receive certification and an emergency pack
 - **CERTIFICATION CARD IN NAEMT LAW ENFORCEMENT**
 - **FIRST RESPONDER TACTICAL CASUALTY CARE TOS INDIVIDUAL FIRST AID KIT**

1600 – 1700 HOURS TRAINING ENDS / VENDOR SHOW



SESSION III



SHERIFF GREGORY J. AHERN
INVITES YOUR ORGANIZATION TO ATTEND

TACTICAL EMERGENCY CASUALTY CARE



September 4, 2014

0730-1130 HOURS TRAINING SEMINAR • 0800-1700 HOURS VENDOR SHOW



This program is supported by the California Emergency Management Agency in cooperation with 2011 UrbanShield Security Initiative and funds awarded by the U.S. Department of Homeland Security.

**OAKLAND MARRIOTT
CONVENTION CENTER**
1001 Broadway • Oakland, CA 94607

SEMINAR & LUNCH PROVIDED AT NO COST

0730 – 0830 Hours
CHECK-IN

0830 – 1130 Hours
TACTICAL EMERGENCY
CASUALTY CARE

1130 – 1230 Hours
DISASTER PREPAREDNESS
RESPONSE AND RECOVERY

1230 – 1700 Hours
TRAINING ENDS / VENDOR SHOW

Register no later than
August 29, 2014 at
<http://ustraining.acso.net>

For more information contact
Jane Manzo | 510.272.6921
jmanzo@acgov.org

UrbanShield.org

0730 – 0830 HOURS CHECK-IN

0830 – 1130 HOURS
TACTICAL EMERGENCY CASUALTY CARE | ROOMS 1,2, 3 (UPSTAIRS)



Geoffrey L. Shapiro Director, EMS & Operational Medicine Training
Emergency Health Services Program, The George Washington University
School of Medicine and Health Sciences

Mr. Geoff Shapiro has been involved in EMS since 1993 serving in various capacities from clinical provider to currently serving as the Director of EMS & Operational Medicine Training at The George Washington University. He has been responsible for operational medical support and developing, managing, and updating diverse education programs for university, hospital, civilian EMS, federal law enforcement, and military special operations communities, including eleven years as a lead instructor and program manager at a premier federal law enforcement training center in the Washington, DC area. Mr. Shapiro is also a founding member and executive board member of the Committee for Tactical Emergency Casualty Care (C-TECC) which is tasked with the appropriate translation of military lessons learned and doctrine from the battlefield to civilian crisis and medical response. Geoff has authored a Law Enforcement Emergency Responder textbook and frequently publishes and presents at domestic and international conferences and workshops.

The Tactical Emergency Casualty Care (TECC) guidelines represent a set of evidenced based best practices for the immediate medical management of wounded at or near the point of wounding for use by all first responders in all prehospital high-risk scenarios. Its application is not limited to law enforcement settings, but is intended for any situation where there is an increased on-going threat to the provider and patient. Similar to what the Tactical Combat Casualty Care guidelines did for military settings, civilian first responders need a framework for use in dangerous operational scenarios that defines constraints in both the civilian environment and resources while providing guidance to accomplish the life-saving mission. Developed from military battlefield TCCC guidelines, TECC balances the on-going threats, civilian scope of practice, differences in civilian population, medical equipment limits, and the variable resources for response in civilian atypical emergencies. These guidelines represent a treatment framework that accepts mitigated risk while providing a significant life saving benefit. TECC at its most basic level seeks to define the correct intervention at the correct time in the continuum of pre-hospital care. This course will introduce the concepts of TECC, allow hands-on familiarity with common equipment in use with the guidelines, and discuss Rescue Task Force (escorted warm zone care) and other applications.

1130 – 1230 HOURS
DISASTER PREPAREDNESS RESPONSE AND RECOVERY



Justin Dombrowski Director, Response Division FEMA Region IX

Justin Dombrowski joined the U.S. Department of Homeland Security's Federal Emergency Management Agency's Region IX office as the Response Division Director in September 2009. Programs under his direction include the Incident Management Assistance Teams (IMATs), Watch Centers, Regional Response Coordination Center (RRCC), operations, logistics, emergency communications and planning including catastrophic plans.

Justin served as the first Operations Section Chief for the National-IMAT-West in 2009. Since 2006, he was a Federal Coordinating Officer based in FEMA Region VIII. Prior he served as the Director of Emergency Management for the City of Boulder and Boulder County, CO. He also worked for the Boulder Fire Department and with other federal, state and local agencies including as a volunteer firefighter. He has served as an Incident Commander and other leadership positions on over 100 major wildfires across the country on national, regional and/or all-hazard Incident Management Teams (IMTs). Justin has responded to more than 35 Presidential disasters and incidents including National Special Security Events, in over twenty states, including the 9/11-World Trade Center Attacks, Hurricane Katrina/Rita and Hurricane Sandy.

Justin has served in significant leadership positions with international, national, state and local projects in emergency management. He has presented and instructed at international and national conferences and academies and has extensive experience working with the media. Justin has written college curricula and instructed at numerous universities. He has a Masters Degree in Public Administration, graduate of the Naval Post-graduate School Executive Leadership Program and further advanced education in emergency management and other programs.

The pre-exercise workshop is designed to provide emergency managers, law, fire and EMS first responders participating in Urban Shield an opportunity to learn about key issues and initiatives in disaster preparedness, emergency response and recovery. This workshop will provide attendees key insights to first responders becoming involved in catastrophic planning for their community.

1230 – 1700 HOURS TRAINING ENDS / VENDOR SHOW

YELLOW COMMAND SEPTEMBER 5, 2014

- Functional and full-scale exercise in response to a mass casualty event.
 - Moffett Field target
 - Military appreciation event
 - Three IED's explode
 - 200+ casualties
 - Patriotic Brotherhood of the Bay Area members escape
 - Vow additional attacks in Bay Area
- Regional Objectives:
 - Evaluate EOC/Hospital coordination on medical surge, patient tracking and movement
 - Evaluate and test the Regional Catastrophic Earthquake Donations Management Plan
 - Stand up a Joint Information Center and evaluate the Joint Information System



YELLOW COMMAND SEPTEMBER 5, 2014

Participants

- Cal OES Coastal Region (REOC activation)
- County of Alameda (EOC and JIC activation)
- County of Marin (partial EOC activation)
- County of Santa Clara (partial EOC activation)
- County of San Mateo (EOC and Field JIC activation)
- County of Sonoma (EOC activation)
- City/County of San Francisco (partial EOC and full JIC activation)
- City of Oakland (partial EOC activation and coordination with hospitals via WebEOC)
- City of Palo Alto (EOC activation)
- City of Sunnyvale (EOC activation)



YELLOW COMMAND SEPTEMBER 5, 2014

Participants continued

- Public Information Officers from multiple jurisdictions
- Children's Hospital Oakland (patient surge)
- Alta Bates Summit Medical Center
- Stanford Hospital (patient surge and tracking)
- Camp Parks
- California Volunteers (REOC staff)
- Salvation Army (donations management)
- American Red Cross (donations management)



QUESTIONS?

